



SPECIALS

OCTOBER | NOVEMBER | DECEMBER 2023



SDI (North America) Inc.
www.sdi.com.au/en-us
Toll Free: 1-800-228-5166



THE FUTURE OF COMPOSITES



SDI | STELA



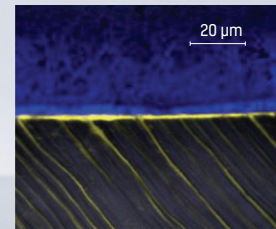
SCAN FOR INFORMATION ON STELA

- ✓ Self-curing unlimited bulk fill
- ✓ Gap-free interface
- ✓ High bond strength
- ✓ Just two simple steps
- ✓ High strength

STELA GAP-FREE BONDING INTERFACE

A confocal micrograph of a gap-free Stela-dentin interface. Note the penetration depth of Stela Primer (yellow) within the dentin tubules.

Source: Dr Salvatore Sauro



STELA INTRO KITS - RISK FREE TRIAL*



1+1* BUY 1, GET 1 FREE

If you are not 100% satisfied return the unopened product for a full refund.



STELA AUTOMIX INTRO KIT - 8640002
1x 8g SYR, STELA PRIMER 5mL



STELA CAPSULES INTRO KIT - 8640004
10 CAPS, STELA PRIMER 5mL

*Conditions apply - Must be returned unopened within 30 days from date of invoice. Limited to 1 trial per clinic.

SDI WHITENING

POLA

ADVANCED TOOTH WHITENING SYSTEM

ALL WHITENING

3+1* BUY 3, GET 1 FREE | **9+5*** BUY 9, GET 5 FREE



OFFICIAL SMILE OF
MISS * USA
MISSTEEN * USA



POLA RAPID
IN OFFICE TOOTH WHITENING SYSTEM

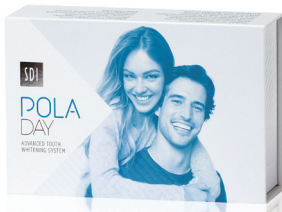


POLA LIGHT
TOOTH WHITENING SYSTEM!



POLA LUMINATE
BRUSH ON & GO!

**REDUCE SENSITIVITY
INCREASE PATIENT ACCEPTANCE
GROW YOUR RESTORATIVE OPPORTUNITIES**



POLA DAY
HYDROGEN PEROXIDE BASED
ADVANCED TRAY TOOTH
WHITENING SYSTEM



POLA NIGHT
CARBAMIDE PEROXIDE BASED
ADVANCED TRAY TOOTH
WHITENING SYSTEM



POLA DAY CP
SUPER FAST TRAY TOOTH
WHITENING SYSTEM!



POLA FOR ALIGNERS
STRAIGHTEN AND BRIGHTEN TOGETHER

ORDER POLA TODAY!

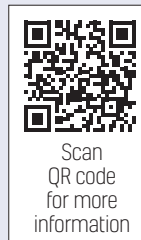
ALL COMPOSITES 3+1* OR 12+6*

AURA RANGE - LUNA RANGE - WAVE RANGE
STELA RANGE - CONSEAL F

LUNA 2

UNIVERSAL COMPOSITE

Luna 2 is the next generation Luna universal composite. Luna 2 has an improved unique blend of fillers that were researched and developed at SDI to deliver enhanced handling, very high radiopacity and reliable mechanical properties. Luna 2 is BPA free for health-conscious patients. Luna 2 makes placing a composite easier than ever.



Images courtesy of Dr. Susan McMahon - USA



» Luna 2 has beautiful optics that mimic tooth structure and let you place fillings that disappear. It has great handling too: no stickiness on instruments and easy sculptability. «

🇺🇸 DR SUSAN MCMAHON - UNITED STATES

THE TRUE AMALGAM ALTERNATIVE TRY STELA TODAY

WITH YOUR NEXT ORDER OF ALLOY

1+1* BUY 1 SDI ALLOY (50 CAPS)
GET 1 STELA INTRO CAPSULE KIT FREE



SDI ALLOY
PERMITE, GS80 OR LOJIC+ (50 CAPS)



STELA

SELF CURE RESTORATIVE

- Unlimited depth cure with self-curing
- Gap-free interface for longevity without sensitivity
- Two steps: with no etching or light curing
- Extremely high flexural and compressive strength
- Available in capsule or automix syringe

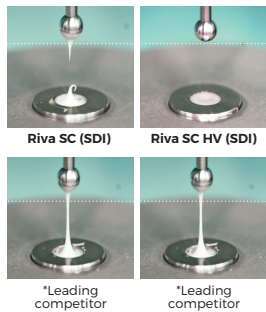
STELA CAPSULES INTRO KIT - 8640004
10 CAPS, STELA PRIMER 5mL

SDI GLASS IONOMERS

RIVA SELF CURE RIVA LIGHT CURE



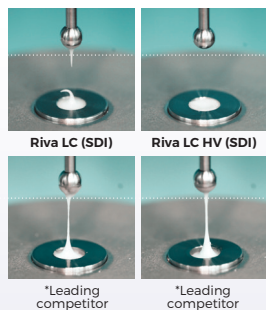
2+1*
BUY 2, GET 1 FREE



RIVA SELF CURE/HV

Riva Self Cure extrudes easily into the cavity with the innovative *ionglass™* particles enabling creamier, non-stick and smoother handling. Polishability is made simple and long-term surface integrity is maintained. For an exceptional packable, high viscosity material, use Riva Self Cure HV.

Riva Self Cure has been independently evaluated as having superior handling. The unique formulation is less stringy or sticky, making placement quicker and easier.



RIVA LIGHT CURE/HV

Riva Light Cure can be effortlessly placed and sculptured without sticking to your instruments. This outstanding restorative does not pluck, saving you time and maintaining placement integrity, especially when restoring upper teeth.

Riva Light Cure offers fantastic handling, perfect for quick placements in patients who require quick restorations, such as children, people with special needs or patients with back or neck problems.



RIVA LIGHT CURE HV

Source: Internal test data Nov 2020 *Not a registered trademark of SDI.

SDI ADHESIVE

SDI | ZIPBOND UNIVERSAL ADHESIVE

ZIPBOND

IMPROVED BOND STRENGTH AND DEFENDS AGAINST CLINICAL VARIABILITY

- Consistent bond strengths to dentin and enamel
- Wet and dry dentin bonding
- Proprietary combination of adhesive monomers including MDP
- Predictable bond strengths to indirect substrates
- Effective hybridization
- Exceptional control
- Highly aesthetic
- Pleasant aroma

Zipbond Universal
Bottle Refill [8100502]
1 x Zipbond Universal 5ml Bottle



2+1* BUY 2,
GET 1 FREE

PLUS BONUS SUPER ETCH

Super Etch [8100045]
10 x 2mL (2.5g) syringes
50 single use disposable tips



SUPER ETCH

37% PHOSPHORIC ACID ETCH GEL

- Stays where placed
- Does not run onto soft tissue
- Washes away easily with water
- Easily controlled gel which flows under direction, not gravity
- Blue tint for easy placement visibility

SDI CEMENTS

RIVA LUTING RIVA LUTING PLUS



2+1*
BUY 2, GET 1 FREE

RIVA LUTING PLUS

Riva Luting Plus is a resin modified, self curing, glass ionomer luting cement, designed for final cementation of metal, PFM and resin crowns, bridges, inlays and onlays plus ceramic inlays and crowns. Riva Luting Plus chemically bonds to dentin, enamel and all types of core material.



INDICATIONS

Cementation of metal or porcelain fused to metal inlays, onlays and crowns
Cementation of stainless steel crowns
Cementation of posts and screws
Attachment of metal orthodontic bands
Lining

RIVA LUTING

Riva Luting is a conventional, self curing, glass ionomer luting cement designed for final cementation of metal based restorations. It chemically bonds to metal substrates and the tooth.

INDICATIONS

Cementation of resin, metal, or porcelain fused to metal inlays, onlays, bridges and crowns
Cementation of ceramic inlays and crowns
Cementation of pins, posts and screws

COMING SOON!

SUPERIOR BOND

HIGH STRENGTH

LESS WASTE



SDI | RIVA CEM AUTOMIX
RESIN MODIFIED GLASS IONOMER LUTING CEMENT



SDI EQUIPMENT

2+1* BUY 2,
GET 1 FREE

RADII XPERT

SMARTER DESIGN.
OPTIMAL CURE EVERY TIME.

Radii Xpert's unique target assist technology enables you to correctly position the light and be confident of the angulation before curing.

360°
ROTATABLE HEAD

185g
LIGHT WEIGHT

2.5 HOUR
RUNTIME



RADII-CAL CX

COLLIMATED FOR A DEEPER,
MORE RELIABLE CURE

The collimated beam of the Radii-Cal CX delivers curing uniformity across all curing depths. This ensures a fast and predictable cure for all restorations.



COLLIMATED
LIGHT



ERGONOMICALLY
DESIGNED



SMART BATTERY
TECHNOLOGY



COMPOSITES | GLASS IONOMERS | TOOTH WHITENING | SDF RIVA STAR | EQUIPMENT | CEMENTS | ADHESIVES | ETCHANTS | SEALANTS | AMALGAMS | ACCESSORIES

SDI | YOUR SMILE. OUR VISION.

facebook.com/sdinainc | instagram.com/sdinainc

SDI (North America) Inc.
1279 Hamilton Parkway
Itasca, IL 60143

Toll Free 1 800 228 5166
Fax: 630-361-9222
usa.canada@sdi.com.au
www.sdi.com.au

Redeem your free goods by sending your invoice to:
usa.canada@sdi.com.au or fax 630-361-9222

*Please allow 2-4 weeks for delivery. Please note offers cannot be combined. Offers cannot be used in conjunction with contract pricing. Valid on invoices dated October 1st - December 31st, 2023. All claims for free goods must be made within 60 days from the end of promotion date. **Purchases must be on one order to qualify for free goods.** Free products must be of equal or lesser value. Offers are valid in the US only.

EASTERN REGION

JUSTIN JOURDAN
Eastern Regional Sales Manager
Cell: [224] 240-1791
Justin.Jourdan@sdi.com.au

ANDREW POLK
NYC Metro and Northern NJ
Cell: (718) 309-5589
Andrew.Polk@sdi.com.au

SHANTELE BYRD
Michigan Northern IN
Cell: (313) 520-4114
Shantelle.Byrd@sdi.com.au

MARK GUZIOR
MA, ME, NH, CT, VT, RI
Cell: (603) 553-3121
Mark.Guzior@sdi.com.au

CARRIE COOMER
OH, KY Southern IN
Cell: (957) 214-7410
Carrie.Coomer@sdi.com.au

ALEX ALCORTA
Florida
Cell: (561) 358-9291
Alex.Alcorta@sdi.com.au

DINORAH ROBLES
Central/Northern IL, WI
Cell: (630) 542-7988
Dinorah.Robles@sdi.com.au

JIM POTEAT
GA, SC, NC, TN
Cell: (704) 995-7303
Jim@Poteatdentalsolutions.com

MIKE MATUCH
Upstate NY, Erie/Pittsburg, PA, WV
Cell: (716) 913-8354
Michaelmatuch@yahoo.com

LOUIE KALOUDIS
MS, AL, DC, VA
Cell: (630) 363-9224
Louie.Kaloudis@sdi.com.au

VINCENT GALASSO
PA, DE, SOUTHERN NJ, MD
Cell: (717) 395-0599
Vincent.Galasso@sdi.com.au

WESTERN REGION

DAN NIEHOFF
Regional Sales & National Accounts
Manager - Western Region
Cell: (424) 212-3742
Dan.Niehoff@sdi.com.au

CLAUDIA CARRILLO
Northern California, Reno, NV
Cell: (408) 893 8728
Claudia.Carrillo@sdi.com.au

DAN NIEHOFF
Los Angeles, Ventura, Kern Counties
Santa Barbara County
Cell: (424) 212-3742
Dan.Niehoff@sdi.com.au

JENNIFER BOLTON
OC, San Diego, Las Vegas, HI
Cell: (949) 413-9035
Jennifer.Bolton@sdi.com.au

LORI KELLAR
WA, OR, AK, ID, MT
Cell: (206) 896-1485
Lori.Kellar@sdi.com.au

KARLYN RASMUSSEN-DODD
TX, OK
Cell: (832) 928-6938
Karlyn.Rasmussen-dodd@sdi.com.au

TIM VANWYCHEN
MN, ND, IA, SD, NE
Cell: (651) 231-2801
VanWychen@hotmail.com

DOUG SCHROEDER
MO, KS
Cell: (314) 422-0061
dsiltid@charter.net

FOR TECHNICAL QUESTIONS, PLEASE CALL OUR SDI PRODUCT EXPERTS AT **1-800-228-5166** AND PRESS 2